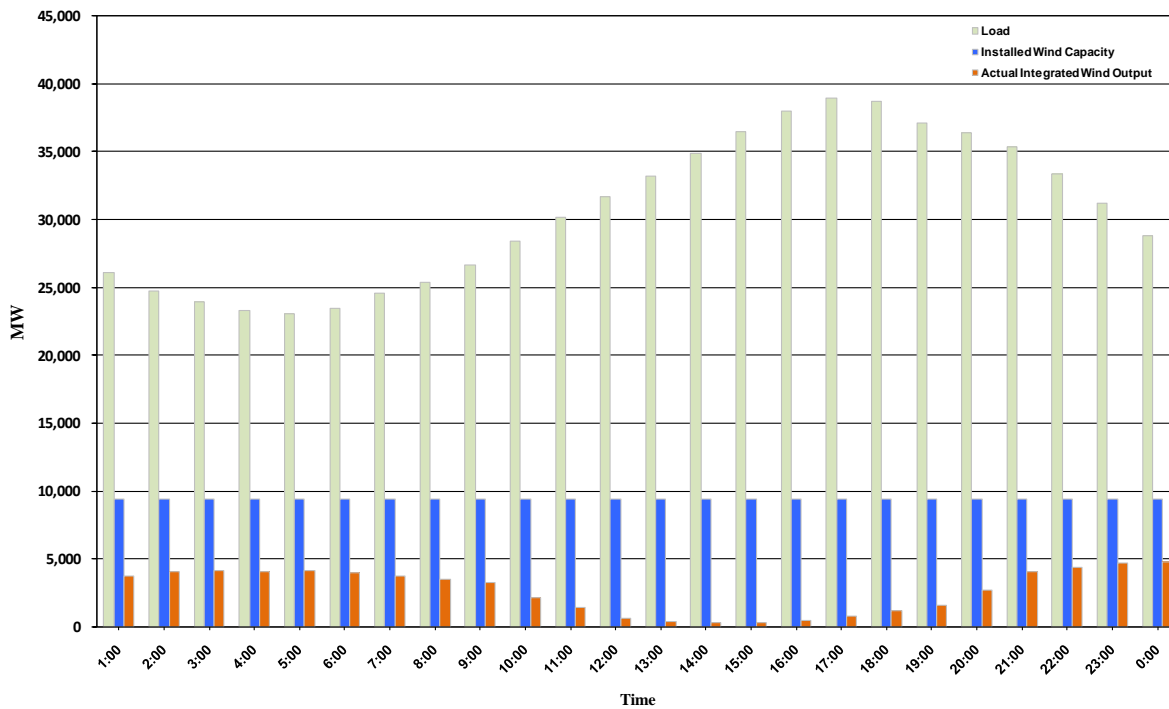




ERCOT Grid Operations Wind Integration Report: 10/09/10

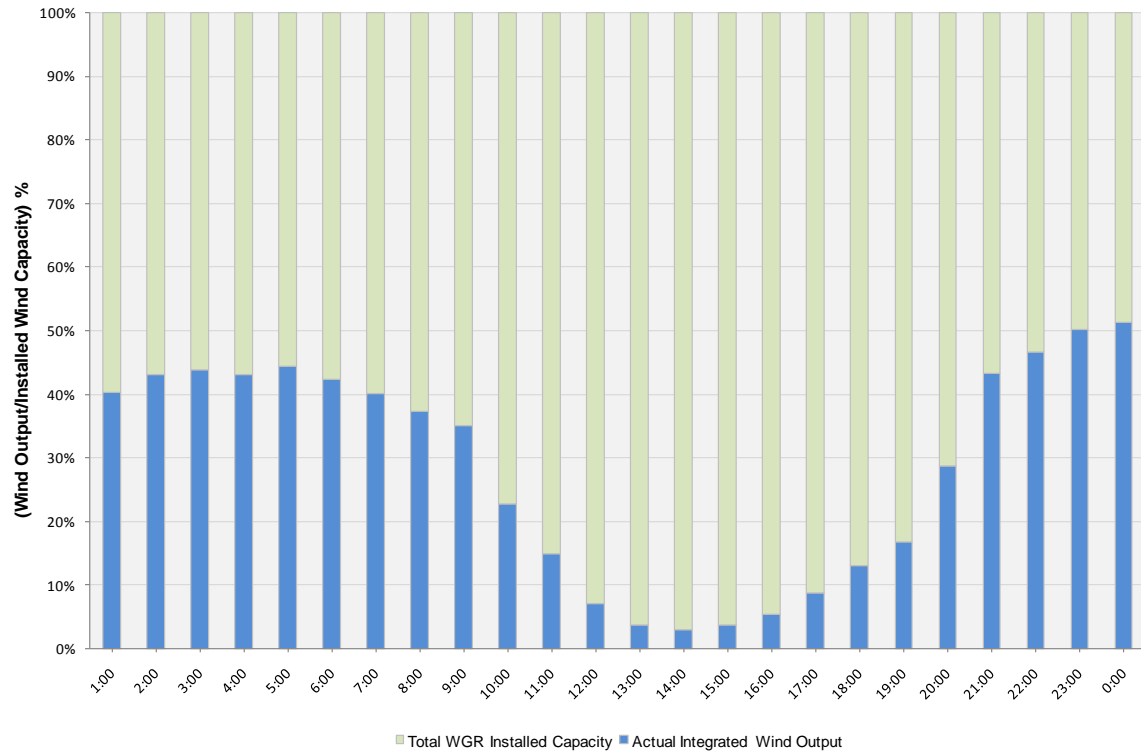
Peak Load	38,906 MW
Load Peak Hour	17
Wind Record 06/12/10	7016 MW
Max Wind value	5036 MW
Wind Peak Hour	21:53:04
Wind Integration %	15.46

Hourly Average Actual Load vs. Actual Wind Output
10-09-2010

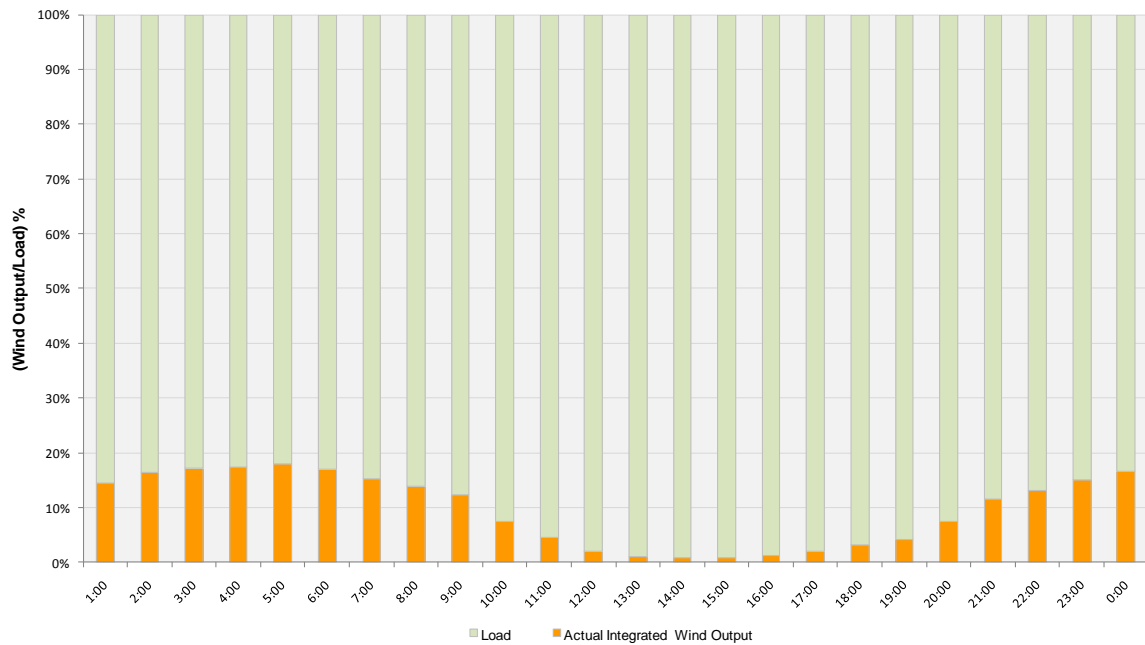




Actual Wind Output as a Percentage of the Total Installed Wind Capacity
10-09-2010



Actual Wind Output as a Percentage of the ERCOT Load
10-09-2010





ERCOT Load vs. Actual Wind Output 10/02/10 - 10/09/10

